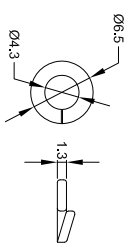
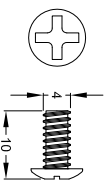


Revision Notes:			
1. MACHINE SCREW LENGTH TO 10MM.			
Checked By: LB	Approved By: DK	Date Released: 23/03/12	



SPRING/LOCK WASHER
 QUANTITY: 6
 WASHER TYPE: SPRING.
 O/DIAMETER: 6.5MM.
 I/DIAMETER: 4.3MM.
 THICKNESS: 1.3MM.
 MATERIAL: METAL.
 FINISH: SILVER.



BODY MOUNTING MACHINE SCREW
 QUANTITY: 6
 THREAD TYPE: M4.
 DIAMETER: 4MM.
 LENGTH: 10MM.
 HEAD TYPE: PHILIPS PAN HEAD.
 FINISH: SILVER.

- NOTES:**
1. 2 X SPRING/LOCK WASHER & MACHINE SCREWS ARE SUPPLIED SCREWED INTO CAMERA BODY.
 2. REMAINING 4 X SPRING/LOCK WASHERS & MACHINE SCREWS ARE SUPPLIED IN A PRESS SEAL BAG.
 3. DIMENSIONS IN MM

PROPRIETARY NOTICE
 THIS DESIGN AND TECHNICAL INFORMATION APPEARING ON THIS DRAWING IS THE PROPERTY OF BRIGADE ELECTRONICS, AND IS DISCLOSED IN CONFIDENCE. IT IS NOT TO BE COPIED, REPRODUCED, REVEALED TO OR EXPLOITED BY OTHERS, EITHER IN WHOLE OR IN PART WITHOUT THE EXPRESS WRITTEN CONSENT OF BRIGADE ELECTRONICS.



 Third Angle	Assembly Pl Approval XINYU HUANG(21/03/12)	Approved by DKERAI	Checked by BCHILDS	Drawn by MBUTLER
	Angle of Projection	Units mm	Scale N/A	Released 15/05/10
Status RELEASED		VBV-7/1XXC FIX		
Stock Code 3191		BE-001056-01-10		